

MULTI HOLE TYPE ASTM

**MOD. 13550****DN INT. PIPE 50-1200 mm****DN EXT. PIPE 200-1600 mm**

Multihole end seals for sealing the cavity between the main pipe and the casing pipe at the ends of crossing.

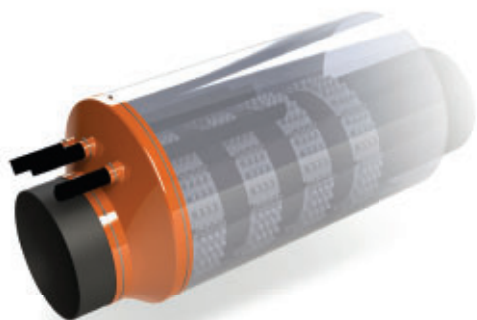
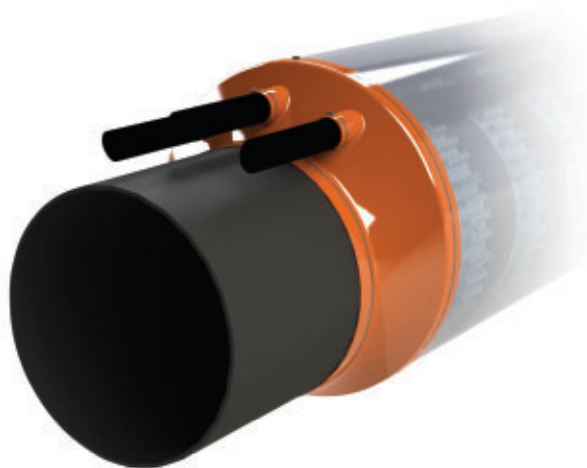
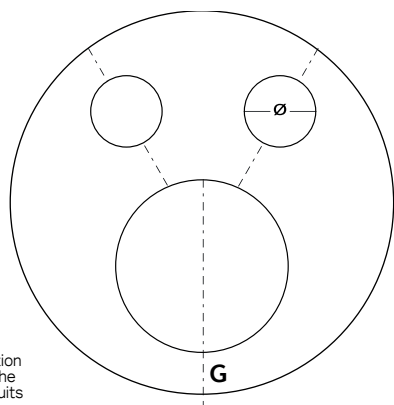


Fig. 1



O.D. jacket pipe

I.D. jacket pipe

H spacer

O.D. main pipe: position and size \varnothing of the additional conduits**CHARACTERISTICS**

- Application in case of high eccentricity between the main pipe and the casing pipe.
- Available with several openings for the insertion of conduits in the same crossing.
- Dimensions and positions of the openings that can be customized prior to order (Fig.1: example schetch to be communicated when ordering).
- Available in a reinforced version (ASTMV) for application in case of high mechanical stress.
- Available in special version (ASTM-KMR) for low-pressure seal testing (i.e. water drainage pressure test), with the adhesive and additional extra-straps.
- Available in special material for classes of high fire resistance.
- Fixing on pipes by metal straps (included).

MATERIALS

PVC plastic:
Hardness 50 ± 5 Shore A

Thickness:
ASTM 6-8 mm / ASTMV 9-11 mm

Colour:
Red

Fire resistance class:
B2 (DIN 53382/DN4102)

Tensile strength:
 ≥ 18 MPa

Elongation:
 $\sim 360\%$

Straps:
Stainless steel

HOW TO APPLY MULTIHOLE ASTM TYPE END SEALS

For this version it will be necessary to insert the end seal on the main pipe before installing it into the casing pipe. Finally fix on the pipe by the supplied straps.

MAIN PIPE DN (mm)	CASING DN (mm)
from 50 to 1200	from 200 to 1600